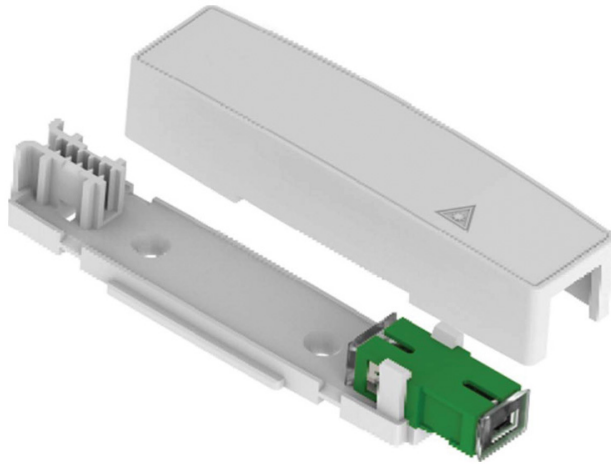


FTTX-IWP-SLIMFIT-APC: Compact Fiber Optic Enclosure



Product Snapshot

- Ultra-compact low-profile fiber optic enclosure
- PVC plastic construction with gloss white finish
- Mounts directly to flat surfaces with screws or double-sided tape
- Includes a factory-installed simplex single mode SC/APC coupler
- Snap-in compatible with LC couplers (sold separately)
- 3.75"W x 1.0"H x 0.78"D overall dimensions
- Enclosure cover securely snaps directly to the base, providing a clean and finished aesthetic
- Designed for indoor installation

The LightSpeed Technologies® FTTX-IWP-SLIMFIT-APC ultra-compact low-profile fiber optic enclosure manages fiber cable and connections in an aesthetic, easy-to-install package.

The FTTX-IWP-SLIMFIT-APC is designed for indoor installation and mounts directly to flat surfaces with screws or double-sided tape. After mounting, the high-gloss cover snaps over the base to protect cables and connections.

The FTTX-IWP-SLIMFIT-APC ships ready for fiber optic broadband (FTTx) connections with a factory-installed simplex single mode SC/APC coupler and mounting hardware.

