

# Wall Mount and Patch Enclosure

Small, empty w/solid metal door



Cleerline SSF™ Small Wall Enclosure accommodates 1 SSF™ or LGX® adapter plate.

The box will house inline adapters, pigtails and splice sleeves.

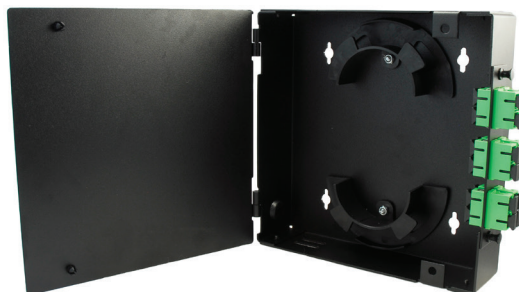
This enclosure features a 3/4" knockout for maximum installation flexibility. The enclosure is fastened via secure plunger-and-grommet type closures.

Adapter plates are available separately.



## FEATURES AND BENEFITS

- Accommodates 1 adapter plates
- LGX® compatible adapter plates
- Durable construction
- Compact design
- Integrated fiber management
- Ideal for data applications
- Splice or directly terminable



## SPECIFICATIONS

Adapter Plates	1
Splice Trays	2
Dimensions	8.0"H x 8.0"W x 2.0"D
Compatible with	SSF™ adapter plates

## PART NUMBERS

SSF-SWM-SOLID-NL-E1	Small, empty with solid metal door, no lock
---------------------	---